

SEWAGE NEWS

Monitoring visits to the Waste Water Treatment Works continue as concerns about its adequacy remain. Results will be published once a full-year cycle is complete.

The Lead Local Flood Authority (CCC) has undertaken searches for surface water infiltration, which is known to be extensive.

The Parish Council has now approved a proposal to develop a community based project (Clean Water; Clean Streets) aimed at bringing all partners to the table, but especially United Utilities who are responsible for water, sewage and river conditions. Hopefully, together, we can solve the discharge problems. Our website will give more details when the project takes shape.



CLEAN RIVER KENT

Come along to CRKC's Autumn 'drop-in' Open Event on

**Friday 21st October
4 – 7pm at The Pavilion.**

There will be refreshments, a series of displays to look at, activities asking for feedback or suggestions, and the 'premiere' of a film featuring CRKC volunteers talking about the Rights of the River Kent.

At 6pm there will be a presentation about the summer activities, and plans for 2023.

YOUR COMMUNITY PLAN

Lots of work and fantastic achievements by residents of Staveley and Ings have contributed to achieving the Community Plan priorities, including :

- ✿ The playground has been revamped with contributions from 200 donors, including 80 businesses in the village.
- ✿ We've been offered £260,000 from SLDC Community Homes Fund to research and prepare plans to take on the Abbey from Cumbria CC.
- ✿ The community cupboard has provided basic foods so nobody needs to go hungry.
- ✿ Food FareShare is helping 40 households each week and preventing foodwaste.
- ✿ The 'sewage group' and Clean River Kent are providing evidence to put pressure on United Utilities
- ✿ There are EV chargers and an ebike scheme at the Mill Yard.

**Come to
The Institute at 12 noon - 1 pm
The Pavilion 2 pm - 6 pm
on Saturday 22 October
To find out more and shape
developments.**

**To find out more about anything in this
newsletter go to :**

www.staveleywithingspc.co.uk/keeping-in-touch



**To find out more about What's On in Staveley go to
<https://thesva.org/whats-on>**

STAVELEY WITH INGS

COMMUNITY NEWS

AUTUMN 2022

**Welcome to the autumn edition of
Community News!**

**It gives you a brief outline of what is
going on in Staveley and Ings to turn
the Community Plan into reality with
links to where you can find out more.**

**WARM SPACES @THE INSTITUTE
The Institute is opening its doors to
welcome you this winter!**

**Tuesdays and Thursdays from
1 November 2022, 11 am to 3 pm
with an optional free lunch at 12 noon.**

In this time of higher energy bills, why don't you come and stay warm together, chat with friends, meet new people, discover what's going on and maybe use one of the Community iPads. Drop in during the first week to share your ideas about how the space could be used in the weeks ahead.



**To volunteer email
staveleytogether@gmail.com**

MEET RESTON AND CRAGGY

SENS has launched Staveley's very own pay-as-you-ride ebikes, the first community ebike scheme of its kind in Cumbria and the UK. The scheme is based in Staveley Mill Yard. Reston and Craggy (the first bikes) will be available to book 24/7 365 days per year, for as little as an hour, to anyone over 14.

The ebikes are ideal for local residents and businesses to make local trips for leisure, work, shopping etc. It's a membership scheme with really low hourly rates.

For more information or to register:
www.communityebikes.org



HIGHWAYS CONSULTATION

The consultation period is over but there's still much to do to solve our parking, traffic and transport problems.

Residents said they wanted pedestrian crossings near Caldrigg Fold and the play park, wider 20 mph restrictions across the parish and a comprehensive parking strategy.

The Parish Council support these views and made this clear in their response to Cumbria CC highways department. Find out more at

www.staveleywithingspc.co.uk

ALEC ROW CONSULTATION

It's time to choose what you'd like to see at Alec Row.

There are three designs that show what might be possible.

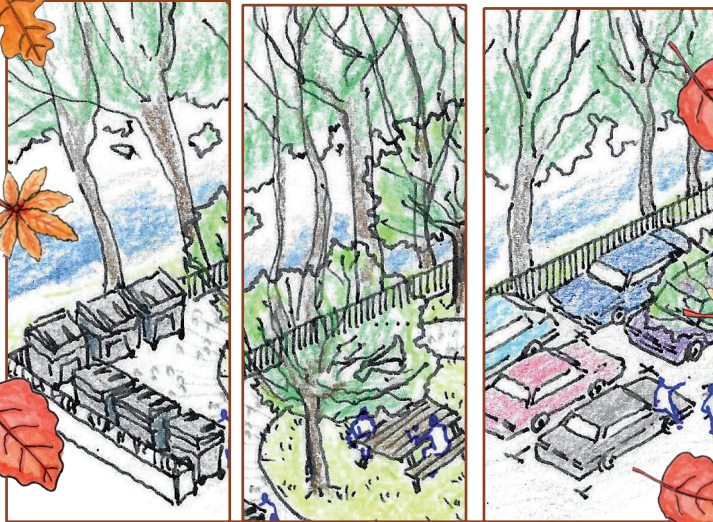
Look at them on the noticeboard at Alec Row or at

www.staveleywithingspc.co.uk.

Indicate which is your favourite idea on the survey, pick up a survey slip at the pharmacy or come to

Warm Spaces @ the Institute on any Tuesday or Thursday

11 am - 3 pm from 1 November.



EMERGENCY PLANNING

A group, led by the PC, are updating the Emergency plans. To see the current plans go to:

www.staveleywithingspc.co.uk



THE NEW ABBEY

Join the Staveley Community Trust to help make the New Abbey come true.

Just by being a member you'll show CCC and potential funders and investors that you support the New Abbey and encourage them to transfer the building and resources to us.

It only costs £1.

To help us reach our target of 1000 members by Christmas go to

www.thenewabbeystaveley.org

or pick up a membership form at

Warm Spaces @ the Institute on a Tuesday or Thursday.

If you're able to give time and expertise to help take the project forward please get in touch at

abbeystaveley2021@gmail.com



BECOME A PARISH COUNCILLOR

You'll represent the residents of Staveley and Ings and help make things happen.

Contact June Lee (parish clerk)

staveleyings.parish@gmail.com

01539 729382

VOLUNTEERS NEEDED!

Can you help with our new website? If you have the skill please get in touch.